

## How can I participate?



1-888-378-8939 (toll-free)  
(806) 378-8939 (local-Amarillo)

If you are a former Pantex worker who would like to participate in the medical screening program, please:

- Return the postcard provided or,
- Call one of the above numbers.

If you leave a message, please provide your name and your phone number(s).

You may also write to:

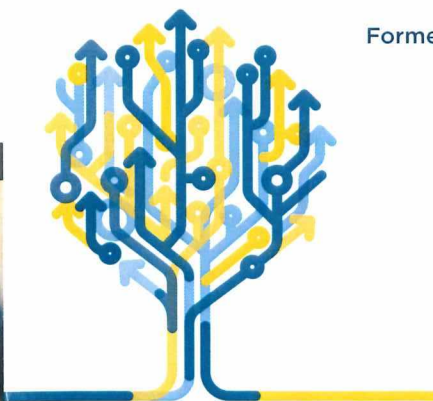
**Pantex Former Worker Program**  
**UT Tyler Health Science Center**  
**Occupational and Environmental Health Sciences**  
**11937 U.S. Hwy. 271**  
**Tyler, TX 75708-3154**



## Comments from a program participant.

I was excited when I learned about and enrolled in the Pantex Former Worker Medical Surveillance Program after I retired from Pantex. It not only provided a no cost extremely thorough and exceptionally comprehensive physical examination every three years, but it gave me confidence that I would have support of the very best in the medical field if a problem was ever discovered. I was stunned when my last physical exam conducted by the program resulted in the diagnosis of lung cancer. The professional, personal and caring support provided by those in the Surveillance Program started immediately and has continued to this day. I absolutely hold those conducting the program in the highest regard for their ethical and continual support and express my sincere gratitude for their frequent and genuine concern during this time of personal anxiety and stress. I wholeheartedly and enthusiastically recommend that all former Pantex workers enroll in this premier opportunity. Had it not been for the program, my cancer would probably neither have been diagnosed nor treatment started at this time. It just makes sense to take advantage of such an outstanding opportunity.

**B. Campbell**  
Former Pantex Worker



**UTTyler**<sup>TM</sup>  
**HEALTH SCIENCE**  
CENTER

## PANTEX FWP

# The Pantex Former Worker Medical Surveillance Program

1-888-378-8939 (toll-free)  
(806) 378-8939 (local-Amarillo)





## What is Pantex FWMSP?

The Pantex Former Worker Medical Surveillance Program (PFWP) is a project being carried out by The UT Tyler Health Science Center and funded by the U.S. Department of Energy (DOE) by cooperative agreement DE-AU00000048. In 1993, Congress passed a law requiring the DOE to evaluate the long-term health conditions of current and former employees who may be at risk for health problems as a result of their employment at DOE sites including the Pantex Plant near Amarillo, Texas.

## What are the goals of the program?

The goals of this program are to:

- Identify and locate those individuals who were employed by the DOE or its predecessors,
- Determine what substances and occupational hazards workers may have been exposed to in the production of atomic weapons at Pantex, and
- Offer free medical screenings to all eligible former workers.

## Who is eligible to participate in this program?

Individuals who previously worked at the Pantex Plant (employee or contractor) and may have had specific work-related exposures are eligible to participate in this medical screening program. Individuals currently working at the Pantex Plant are not eligible until they terminate their employment. After completing an initial screening, former Pantex workers are eligible for follow-up screenings every three years.

## Is there a cost for participating in this program?

Participation in this program is voluntary, and there is no cost for program enrollment or for any of the medical screening tests.

## How will this project benefit former workers?

By filling out health and work history questionnaires, the former worker will benefit by helping the program determine if there are any profiles of work exposures that resulted in potential or specific health conditions for him/her or for other former workers. In addition, eligible former workers receive a free medical screening examination. Former workers must sign a consent form to participate. Personal information is kept confidential, and participants may refuse any of the screening tests offered.

## Where are the medical screenings offered?

Participants are contacted by letter to schedule an appointment for the medical screening at a specially trained clinic in Amarillo or other nationally designated sites through the National Supplemental Screening Program (NSSP). These screenings are scheduled at times convenient to the participant.

## Will a former worker be asked to share any information that violates any agreements of secrecy?

No one will be asked to give any classified information. Former workers should not answer any questions that they are concerned about. If a former worker has questions about disclosing certain information due to security concerns, they should contact the Pantex Security Office at (806)-477-3900 for clarification.

## Will participation be confidential?

Your participation in this program will be considered confidential to the extent permitted by law. Your questionnaire responses will be used only by the Pantex FW Program staff for assessment of your health risk. Only de-identified aggregated results from the screening will be provided for program reporting.

## What is included in the medical screenings?

Eligible participants may choose some or all of the following procedures:

- Complete physical exam with thorough health and work history.
- Spirometry/Pulmonary function tests.
- Comprehensive blood tests.
- Urine test.
- Breast exam (without mammography).
- Pelvic exam.
- Colorectal exam.
- Chest X-ray (per International Labor Organization guidelines).
- Beryllium lymphocyte proliferation test (Be-LPT).

## How do clinicians at UT Tyler Health Science Center relate to the Department of Labor (DOL) compensation programs?

The DOE provides funds to University of Texas Tyler to assure occupational medicine expertise in the performance of the medical screenings for identified former workers. UT Health Science Center at Tyler works with local clinics and clinicians in Amarillo to provide screening exams.

The Pantex FWP is independent from the DOL compensation program. Filing claims with the DOL are separate processes from completing the Pantex FWP health and work history questionnaires. The programs are not connected: however, a former worker may submit the results of his/her medical screening to substantiate a claim with the DOL.

Revised 4/11/2022



**UTTyler**  
**HEALTH SCIENCE**  
**CENTER**